

# LEASE

New Rental  
Rate  
\$18.00/sf.  
NNN



## ABBY Medical Center 1 Centurian Drive Newark, Delaware 19713

- 75,000s.f. Class A Medical Office Building
- Approximately 2 miles or 4 minutes from Christiana Care Hospital
- Easy exit and entry with newly installed traffic light
- Available Space: Suite 103 +/-1,724rsf.  
Suite 110 +/-3,626rsf  
Suite 212 +/-2,532rsf
- Rental Rate: ~~\$20~~ \$18/sf. NNN
- T.I Allowance: Negotiable
- Road Signage Available
- Diverse Tenancy

Abby Medical Center is one of the premier medical facilities in the area offering Class A space with a variety of suite options.

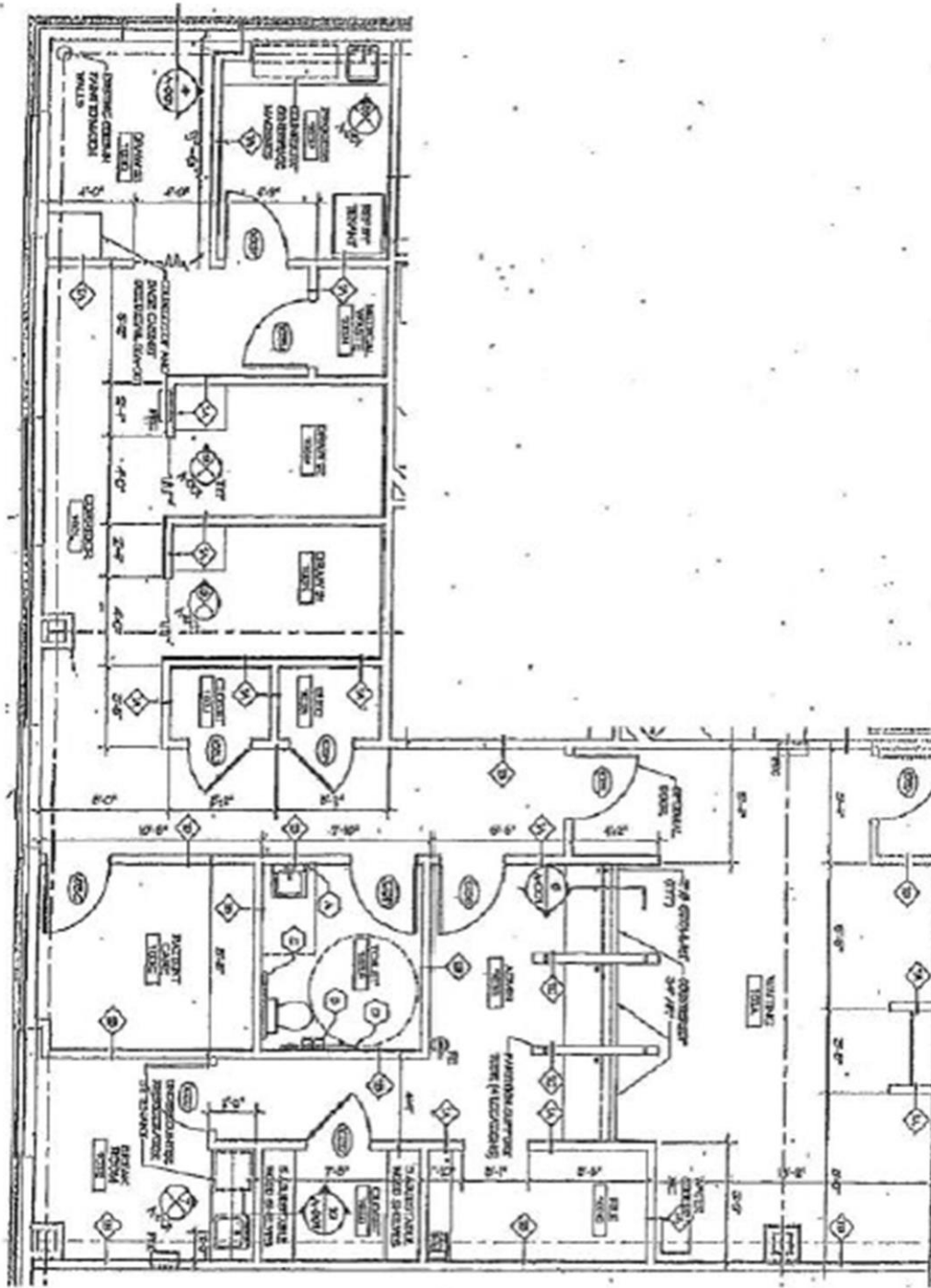


**Contact: John Roach**  
**Musi Commercial Properties, Inc.**  
**5802 Kennett Pike**  
**Centreville, Delaware 19807**  
**Phone: 302-594-1000 x102**  
**Fax 302-594-1005**  
**roach@musicommercial.com**

The information presented is believed to be accurate, but the users must verify it for their own satisfaction. Price and availability are subject to change without prior notice. The Seller's broker, any cooperating broker, and any salesperson working with either are representing the Seller's best interests and have fiduciary responsibilities to Seller, but are obligated to treat all parties fairly.

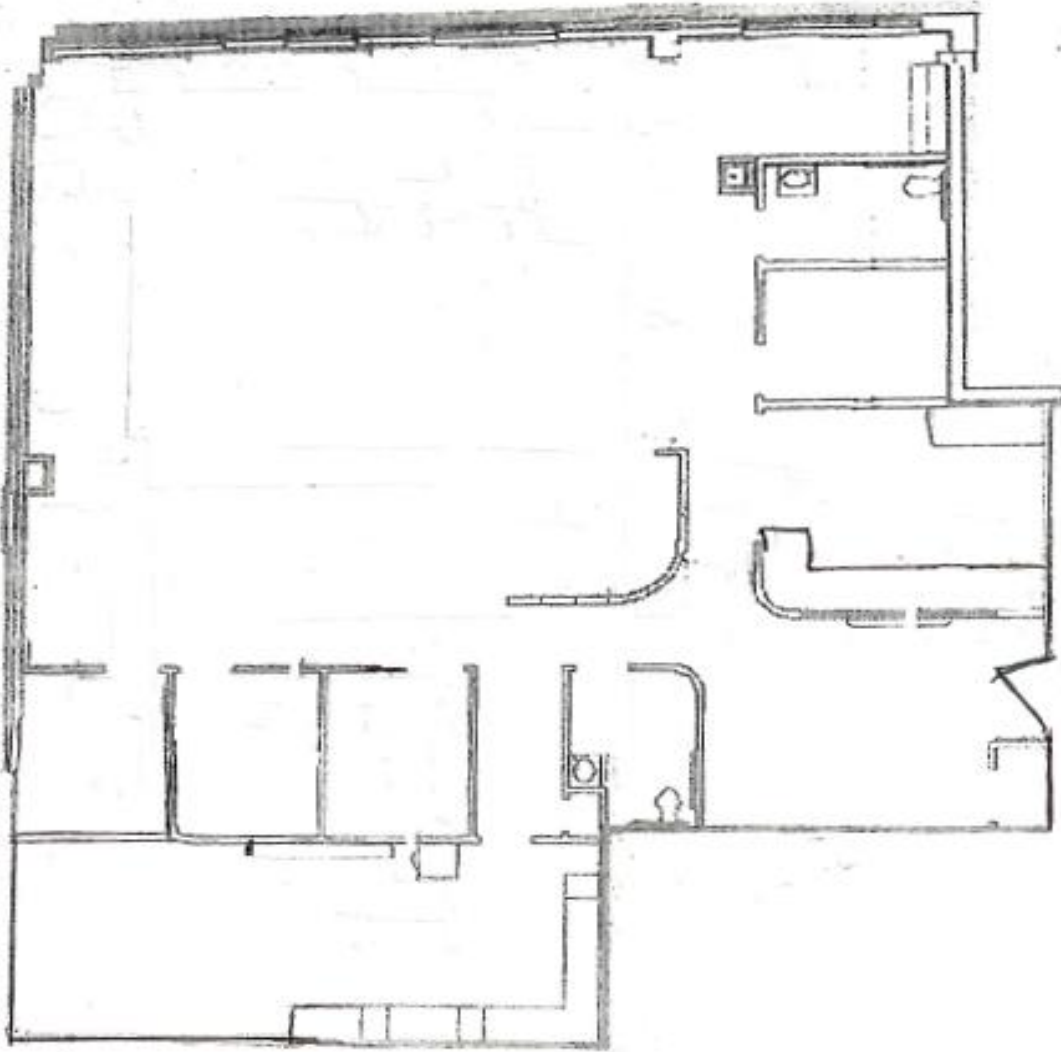
# Floor Plan

Suite 103 +/- 1,723rsf.



Floor Plan

Suite 110 +/-3,626rsf.



Floor Plan

Suite 212 +/-2,532rsf.

Sample Plan – Currently a Shell

