

LEASE



**Turn-Key
Medical Office**

**Foulk Road Office Park Plaza
2004 Foulk Rd Suite 3
Wilmington, Delaware 19803**

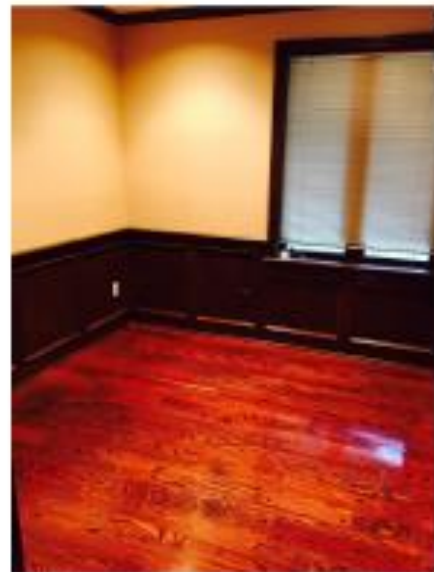
- +/-2,950rsf
- \$17.75/sf. Net of Electric and Janitorial
- Space features 4 Exam & 2 Procedure Rooms
- Generous Parking Available
- Handicap Accessible
- Minutes from I95
- Available Immediately
- Great Location and Demographics



Contact: David Heaney
Musi Commercial Properties, Inc.
5802 Kennett Pike
Centreville, Delaware 19807
Phone: (302) 594-1000 x108
Cell: (302) 229-2242
Fax 302-594-1005
heaney@musicommercial.com



The information presented is believed to be accurate, but the users must verify it for their own satisfaction. Price and availability are subject to change without prior notice. The Seller's broker, any cooperating broker, and any salesperson working with either are representing the Seller's best interests and have fiduciary responsibilities to Seller, but are obligated to treat all parties fairly.



Floor Plan

Suite 3 +/- 2,950rsf.

